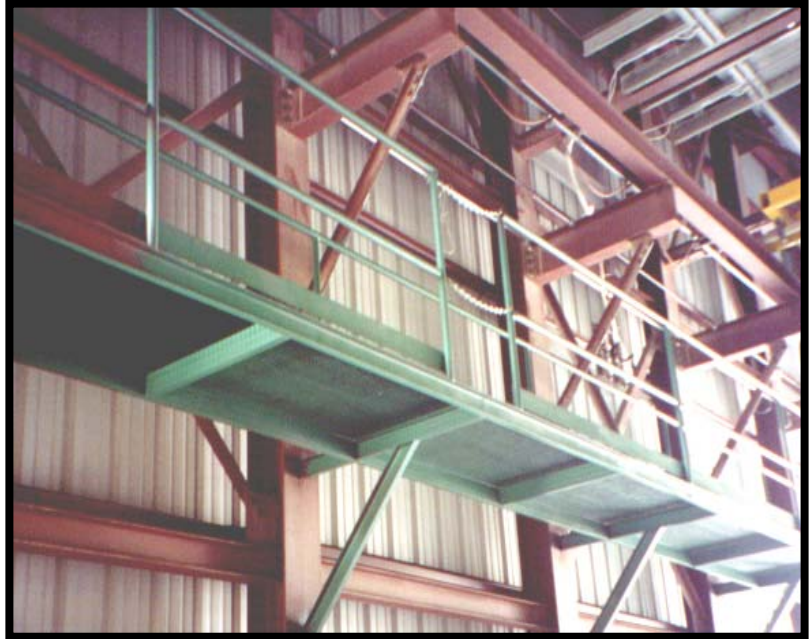


## *Catwalks:*

Standard Catwalks are 3 ft. wide, constructed from 1" x 3/16" smooth bar grating, with hand railing on 4 sides and safety gate. Catwalk is designed to support a live load of 150 lbs. per square foot. Primed with 2 mils D.F.T. Red Oxide. Primary use is to service equipment, gate control and observe the load-out operation.



## *Options:*

- Hot Dip Galvanize
- 2 ft. and 4 ft. widths
- Special Coatings
- Lengths
- Special Supports
- Heavier Design for Live Loads exceeding 150 lbs.