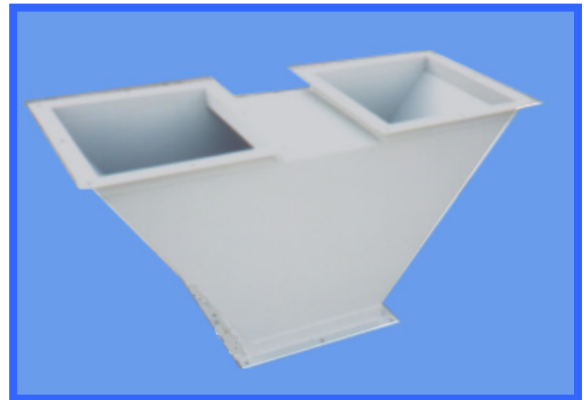
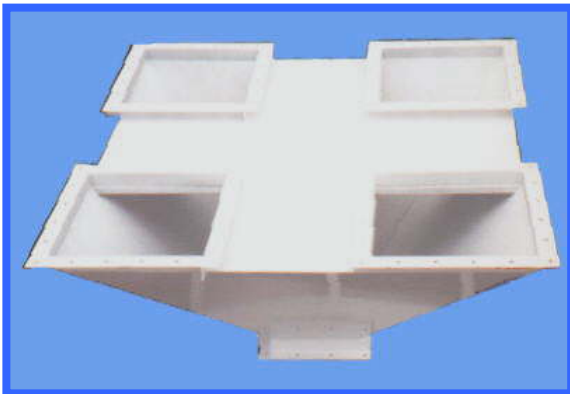


Adaptors: (Gathering Hoppers)

Standard Adaptors are 2 to 1 and 4 to 1, all welded, constructed from 12 gauge hot roll steel, with 2" x 2" x 3/16" angle flanges, 18" x 18". Painted 2 mils D.F.T. gray enamel outside and coated with linseed oil inside. Standard Hole spacing is provided unless otherwise specified.



Weight

18" 4 to 1 Adaptor = 135 lbs

24" 4 to 1 Adaptor = 165 lbs

18" 4 to 1 Adaptor Enclosure = 396 lbs

24" 4 to 1 Adaptor Enclosure = 483 lbs

18" 2 to 1 Adaptor = 85 lbs.

24" 2 to 1 Adaptor = 104 lbs

18" 2 to 1 Adaptor Enclosure = 210 lbs

24" 2 to 1 Adaptor Enclosure = 257 lbs

Height

Adaptor Enclosures

(4 to 1 or 2 to 1)

(18" or 24") = 3'-9"

Standard Adaptors

(4 to 1 or 2 to 1) = 2'-3" (8' x 8'

& 10' x 10') or = 2'-4" (7' x 7')



Options:

- Bolt Pattern
- Heavier gauge construction
- Paint Colors
- Size of inlet or outlet